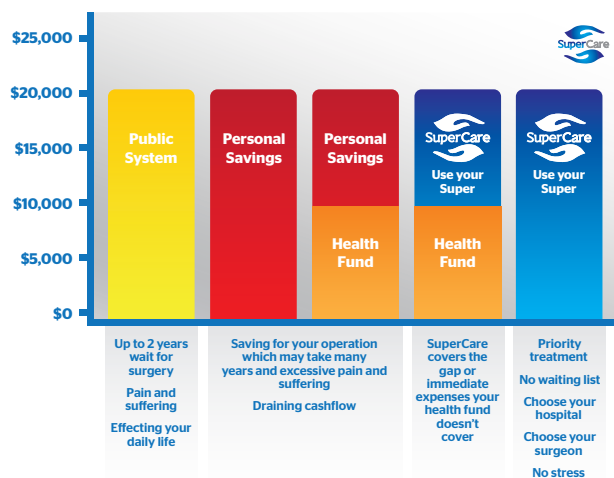


## SuperCare helps you with the cost of:

- ✓ **IVF & WOMEN'S HEALTH**  
Covering all costs of IVF treatment and women's health
- ✓ **ORTHOPAEDICS**  
Knee, ACL, hip and shoulder surgery
- ✓ **GASTRECTOMY**  
Obesity surgery (Gastric banding, gastric sleeve and gastric bypass)
- ✓ **DENTAL**  
Orthodontic, braces, dentures and implants
- ✓ **OPHTHALMOLOGY**  
Cataract and glaucoma surgery, macula degeneration treatment and corneal replacement
- ✓ **REHABILITATION**  
Drug or alcohol programs
- ✓ **PHYSIOTHERAPY**  
Pre and post operative physiotherapy and rehabilitation
- ✓ **FUNERALS and FUNERAL EXPENSES**

## The financial options of surgery



The financial information (above) is indicative only. Please consult your Physician for appropriate costing relating to your condition.

## Want to get started?

Please contact your local SuperCare office to find out more information from one of our friendly consultants.

SuperCare is here to help you.



Invest in *Life*

1300 665 440

[www.mysupercare.com.au](http://www.mysupercare.com.au)

[info@mysupercare.com.au](mailto:info@mysupercare.com.au)

The information contained in this brochure represents general information only. Before making any financial or investment decisions, we recommend you consult a financial planner to take into account your personal investment objectives, financial situation and individual needs. SuperCare Pty Ltd ACN 168 181 084 and its Representatives do not accept any liability for any errors or omissions of information supplied in this material.  
**Disclosure statement:** Early Release of Superannuation applications are assessed under the SUPERANNUATION INDUSTRY (SUPERVISION) (SIS Regs) REGULATIONS 1994 - REG 6.19A. Certain criteria must be met to be granted release. For further information please visit: [www.austlii.edu.au/au/legis/cth/consol\\_reg/sir1994582/s6.19a.html](http://www.austlii.edu.au/au/legis/cth/consol_reg/sir1994582/s6.19a.html)

## Pay for surgery and IVF with your Super!



Invest in *Life*

# Did you know you can pay for surgery and IVF with your super?

On top of the pain and suffering associated with surgery or the stress of trying to conceive, there is also the stress of the financial burden!

## Let SuperCare help you

SuperCare facilitates access to Superannuation - via a 15 year Government initiative - for Clients who:

- Don't have Private Health Insurance
- Lack the financial capacity to pay for their surgery
- Lack the financial capacity to pay the gap not covered by Private Health Insurance
- Need to fund partners and children who don't have accessible superannuation

Use your personal super today to pay for medical procedures or surgery that will provide you or your family members with a better quality of life.

SuperCare provides support and guidance for those who are either time poor or lack the confidence to understand and complete complex forms. SuperCare supports its Clients right through their or their loved ones medical journey.

## FAQ's

### Who is eligible for SuperCare?

All Australian citizens or permanent residents with superannuation.

### Can I use my super to help my family?

Yes - you can help your immediate family. You can, for example, use your super to pay for your child's orthodontic work. Your immediate family members include: husband, wife or partner.

### How long will it take to access my super?

Your SuperCare consultant can organise for medical costs to be paid within 14 - 21 days of your Application being submitted.

### What is the cost of the SuperCare service?

Your SuperCare consultant will discuss costs and payment options during your Consultation.

### What if my Application is not approved?

SuperCare will refund payment on all unsuccessful Applications.

